

H T - 0 1 3 4 - G - C

Specification of Adjustment
Procedure

Issued : '2005/5/11

Product name : T14MZ

1 Running the test program

- 1.1 Insert the test program CF-card.
- 1.2 Turn on the power switch.

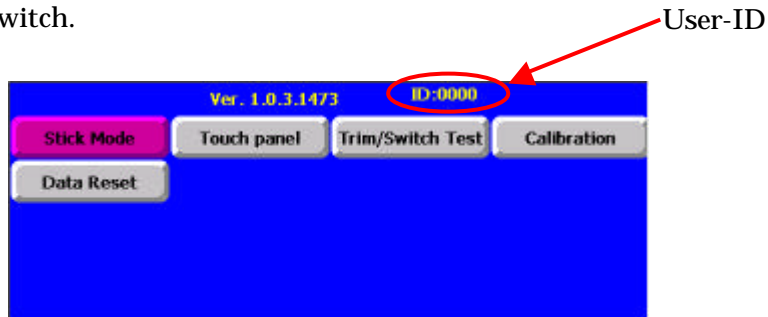


Fig1 Testing menu

- 1.3 LCD displays testing menu and user-ID. If users forget their user-ID and can't unlock security mode, you can unlock security mode by displayed user-ID

2 Setting the stick mode

- 2.1 Push "Stick Mode" button and select desire stick mode. Push enter to effect the setting.

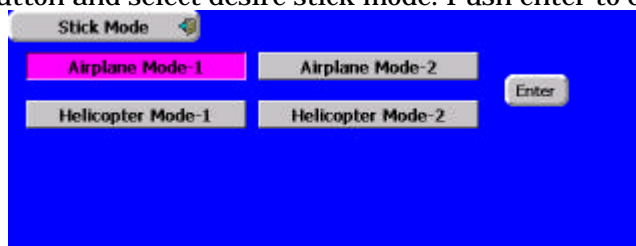


Fig2 Stick mode setting screen

- 2.2 Push "Stick Mode" button to go back to main menu.

3 Compensation of the touch screen sensitivity

- 3.1 Push "Touch panel" button. The sensitivity adjustment of the touch panel screen appears.



Fig3 Sensitivity adjustment screen

3.2 Adjust the threshold values to move the edit rotary encoder. The values -100 is a maximum sensitivity to be a light pressure. The recommended value is -80 .

3.3 Push 5 of the "PUSH" button to confirm the touch feeling. The "PUSH" button is changed to "OK" after pushing the "PUSH" button.

3.4 After 5 "PUSH" button pushed, the "Touch panel" button is enabled. Push "Touch panel" button to go back to main menu.

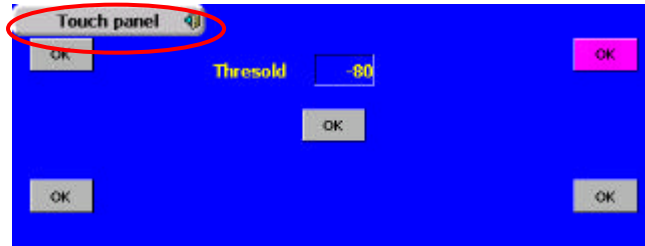


Fig4. The screen of setting finished

4 Trim and edit switch check

4.1 Push "Trim/Switch test" button.

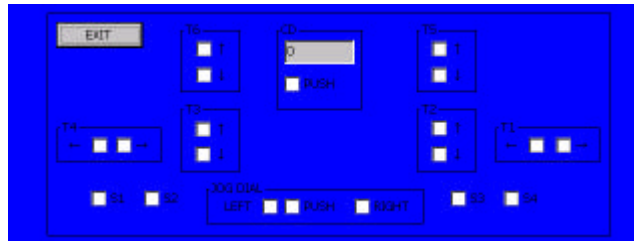


Fig5 Trim/Edit switches checking screen

4.2 Push T1-T6 switches. LCD displays the checking mark when pushing the switch. Making sure all of switches are checked.

4.3 Push CD dial and making sure if the checking box are checked.

4.4 Moving CD and making sure the values is changed.

4.5 Push S1-S4 and making sure checking box are checked.

4.6 Moving and pushing edit dial and making sure checking box are checked.

4.7 Making sure all of the checking box are checked. Push "Exit" button to go back to testing menu screen.

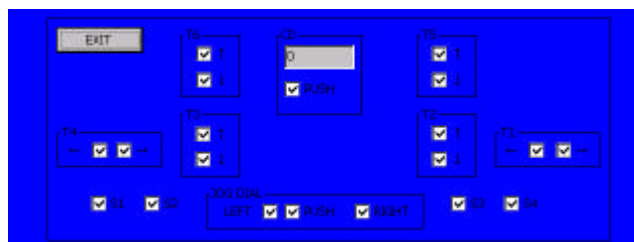


Fig6 Finishing the testing

5 Stick calibration

5.1 Push “Calibration” button.

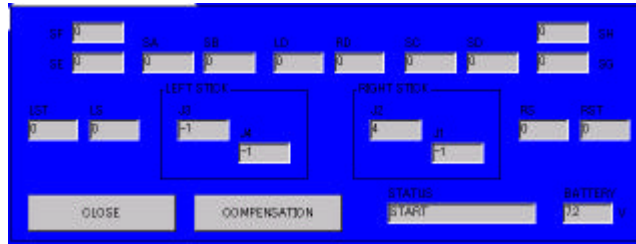


Fig7 Calibration screen

5.2 Push “COMPENSATION” button, selection box appears. Push “LEFT STICK” button.



Fig8 Selection box

5.3 LCD on the status box displays “NEUTRAL”. Hold the left stick to be neutral position and push “COMPENSATION” button.

5.4 After finished the neutral compensation, status box changes to “WIDE”. Hold the left stick to bottom right end and push “COMPENSATION” button.

5.5 After finished wide compensation, status box changes to “NARROW”. Hold the left stick to upper left end and push “COMPENSATION” button.

5.6 LCD displays as Fig7 when compensation is finished.

5.7 Push “COMPENSATION” button again and select “RIGHT STICK”. Compensate the right stick as same manner as compensation of the left stick.

Caution: Don't apply too much force to the stick at wide and narrow compensation. The proper force is a just touching the stick end.

5.8 Go back to Fig7 screen, Push “COMPENSATION” button and select “SW/VR”. There are 3 processes neutral, wide and narrow as same as stick compensation. Holding positions are as follows.



Fig9

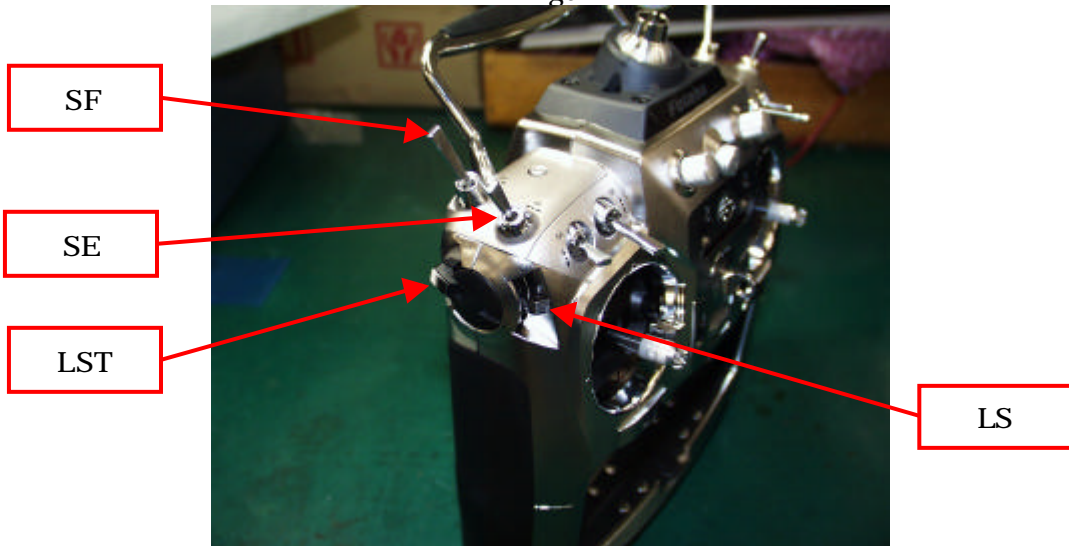


Fig10

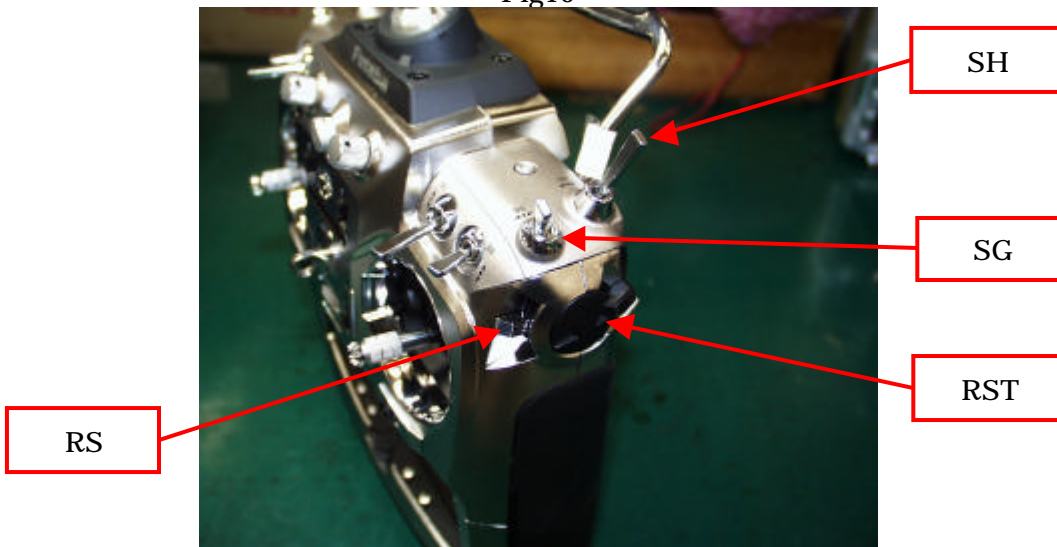


Fig11

5.9 Neutral compensation

Holding positions

LD,RD : Center

LS,RS : Click point

LST,RST : Click point

SA,SB,SC,SD,SE,SF,SG,SH : 3 position switches should be center. 2 position switches are any of position

5.10 Wide compensation

Holding positions

LD,RD : Left side

LS,LST : Down side

RS,RST : Down side

SA,SB,SC,SD,SE,SF,SG,SH : Forward position

5.11 Narrow compensation

Holding positions

LD,RD : Right side

LS,LST : Up side

RS,RST : Up side

SA,SB,SC,SD,SE,SF,SG,SH : Backward position

5.12 Push "CLOSE" button.

6 Data reset

6.1 Push "Data Reset" button and push "All" button. Confirmation screen appears and push "Yes". Data reset must be done to effect the above setting.

Caution: The current model is initialized by executing the Data reset. You could omit this process if you don't want to erase the current model data.



Fig12 Data reset screen

6.2 Push "Data Reset" button.

7 End of test program

7.1 Turn off the power switch.

7.2 Eject the test program CF-card.

-Congratulation-